



Rescue & Re-home

www.rspca-online.co.uk

February 2006, Issue One



Squeak (currently in foster care waiting for a suitable home)

Special Interest Articles:

- Christmas Float success
- Fostering Scheme
- Life as a House Rabbit
- Branch Facts

Top Tip

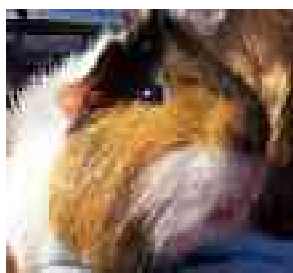
Keep a bottle of Bach Flower 'Rescue Remedy' in your pet's first aid box.

It is easy to administer, by placing a few drops in your pet's mouth can ease shock and feelings of stress. It can even be used before a trip to the vets or after an injury.

Rescue Remedy is a natural therapy, therefore there are no side effects. Normal dose for dogs and cats is twice daily, all other pets once daily.

Any animal can benefit from Rescue Remedy such as cats, rabbits, dogs and birds.

It can be obtained from most natural health stores. As always, discuss any pet



Bubble (currently in foster care waiting for a suitable home)

The quarterly newsletter for friends and supporters of Bedfordshire South Branch

Welcome

This is the first edition of 'Rescue & Re-home', a newsletter for friends and supporters of RSPCA Bedfordshire South Branch. Every quarter you will be given news and information on branch activities.

Features will include fund raising, animals waiting re-homing, success stories, animal tips and more.

This is your newsletter, so please feel free to provide any information or comments to the editor.

Some Branch Facts

The Bedfordshire South Branch of the RSPCA is an independent charity. It carries out vital animal welfare work throughout the local area, from Luton, Dunstable and Leighton Buzzard through to Ampthill, Toddington and Flitwick.

We do not receive government or any other funding from the main RSPCA Society but rely entirely on our own fundraising, and on the efforts of our volunteers and the generosity of local people to continue with our work.

If you are interested in finding out more about our work and ways that you might be able to help, please visit our

Christmas Float Success

On Sunday 11th December branch supporters and Roundtable members walked 'several' streets in Dunstable, accompanied by the Roundtable Float and Father Christmas.

Luckily it was a dry evening and fairly mild for the time of year. The evening was successful due to the kind generosity of residents in the area.

A grand total of £711.00 was collected. This was split with the Roundtable, providing the branch with £350.00.

Once you have read this newsletter, don't throw it away. Pass it on to a family member, friend or take it to work.

You can help re-home our animals and promote the work which RSPCA Bedfordshire South Branch does.

The Editor

joanne_l_vaughan@yahoo.co.uk

web-site www.rspca-online.co.uk or telephone 01582 472768.

We also hold support group meetings on the last Wednesday of every month in the lounge of the Royal British Legion Club, Leagrave Road, Luton from 7.30pm. The group welcomes any new members.

Donations towards our work can be made to Mrs R Marks, Hon Branch Secretary, c/o 3 Buttercup Close, Dunstable, Beds, LU6 3LA.



The Supporters with Santa.

Thank you to all who came along and supported this event.

For more details of animals featured in this newsletter and other rabbits, cats and guinea-pigs looking for a new home please visit our web-site www.rspca-online.co.uk or tel 01582 472768.

Rescue & Re-home



Registered charity no. 259020

www.rspca-online.co.uk



Domino & Jet (currently in foster care waiting for a suitable home)

Fostering Scheme

Our Branch fostering scheme was revived in November 2004 in response to an identified need to take in unwanted, abandoned and stray animals in the Bedfordshire South area.

The aim of the scheme was to alleviate the pressure on the Society's animal centres and other associated boarding facilities in taking in animals from our Inspectors.

Though this remains our aim, the majority of the animals in our scheme now come to us directly from members of the public. Many people are surprised to learn that demand is by far the greatest to take in and re-home pet

rabbits. Sadly rabbits are just too easy to come by in the UK and many are purchased as spontaneous presents for children, soon to be forgotten and relegated to the hutch at the bottom of the garden when the weather becomes cooler or the next "fad" appears.

In the meantime our list for these unwanted pets waiting for a space in our foster scheme continues to grow.

Some manage to find a new owner virtually straight away, others are not so fortunate but there is never a time limit on their stay with us. Currently the Branch is providing temporary homes for Cats, Rabbits and Guinea Pigs.

A Prayer for the Animals

Hear our humble prayer, O God,
for our friends, the animals,
especially for those who are suffering;
for any that are lost or deserted
or frightened or hungry.

We entreat for them all
Thy mercy and pity,
and for those who deal with them,
we ask a heart of compassion
and gentle hands and kindly words.

Make us, ourselves,
to be true friends to animals
and so to share
the blessings
of the merciful.

Amen

Life as a house rabbit

So why have a house rabbit? I think that the benefits of getting to know rabbits even better and seeing other aspects of their personalities develop compensates for the mess and any destructive tendencies that they may have. As I write, my little former RSPCA bun Spot lies sprawled out next to me in front of the fire, a position which requires a 360 roll with pause midway to play dead.

As long as you are prepared to bunny-proof your house, keeping rabbits indoors is rewarding. Ideally, rabbits should be kept in pairs, needing a large cage for when nobody is home and to act as a refuge and toilet area for when they have free access to the rest of the house.

A dog crate is ideal, and should be placed in a quiet corner away from any draughts. The cage should be at least partially covered or contain a large cardboard box that they can hide inside. Usually a rabbit will pick its own toilet corner in its cage and maybe in another room as well.

The most important thing to do when considering a house rabbit is to place all electric cables (especially thinner ones such as those to mobile phones and telephones) out of rabbit reach or cover them with plastic or metal tubing. This will prevent the risk of electrocution of the rabbit or at least replacement of the severed item.

An indoor rabbit should always have access to some time outdoors. Once part of the family you'll hardly notice the odd bit of chewed furniture as their antics such as running in circles around your feet as you try to walk by will have melted your heart.

By Sarah Postlethwaite & Spot



Speckles (currently in foster care waiting for a suitable home with a female)



Spot at work

For more details of animals featured in this newsletter and other rabbits, cats and guinea-pigs looking for a new home please visit our web-site www.rspca-online.co.uk or tel 01582 472768.